

m o o o i

Monster Barstool

MARCEL WANDERS



A soft, puffy and stylish barstool as symbol of the eternal battle between opposite forces that take place in life and can be easily recognized inside ourselves, if we have the courage to open our eyes. Scary? Not at all! You forget all about the monster once you sit down and enjoy the barstool's comfort and softness.

Detailing



The long legs of the Monster Barstool provide an endlessly elegant yet monstrous appearance. Sit down, if you dare!

Colours



Black

CAT 1

Monster Barstool / Diamond High

Dimensions

41cm | 16.1"



51cm | 20.1"



76cm | 29.9"



103cm | 40.55"

Product

WIDTH 41cm | 16.1"

HEIGHT 103cm | 40.6"

DEPTH 51cm | 20.1"

Packaging

WIDTH 51cm | 20.1"

HEIGHT 108cm | 42.5"

CUBAGE 0.33m³ | 11.67ft³

LENGTH 60cm | 23.6"

WEIGHT 15kg | 33.07lbs

Technical

MATERIAL

Steel frame, foam.

SEAT DEPTH

39cm | 15.4"

SEAT WIDTH

42cm | 16.5"

SEAT HEIGHT

81cm | 31.9"

WEIGHT CAPACITY

110kg | 242.51lbs

Monster Barstool / Diamond Low

Dimensions

41cm | 16.1"



51cm | 20.1"



66cm | 25.98"



93cm | 36.61"

Product

WIDTH 41cm | 16.1"

HEIGHT 93cm | 36.6"

DEPTH 51cm | 20.1"

Packaging

WIDTH 51cm | 20.1"

HEIGHT 102cm | 40.2"

CUBAGE 0.31m³ | 11.02ft³

LENGTH 60cm | 23.6"

WEIGHT 13kg | 28.66lbs

Technical

MATERIAL

Steel frame, foam.

SEAT DEPTH

39cm | 15.4"

SEAT WIDTH

42cm | 16.5"

SEAT HEIGHT

66cm | 26"

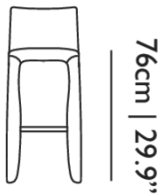
WEIGHT CAPACITY

110kg | 242.51lbs

Monster Barstool / Naked High

Dimensions

41cm | 16.1"



Product

WIDTH 41cm | 16.1"

HEIGHT 103cm | 40.6"

DEPTH 51cm | 20.1"

Packaging

WIDTH 51cm | 20.1"

HEIGHT 108cm | 42.5"

CUBAGE 0.33m³ | 11.67ft³

LENGTH 60cm | 23.6"

WEIGHT 15kg | 33.07lbs

Technical

MATERIAL

Steel frame, foam.

SEAT DEPTH

39cm | 15.4"

SEAT WIDTH

42cm | 16.5"

SEAT HEIGHT

81cm | 31.9"

WEIGHT CAPACITY

110kg | 242.51lbs

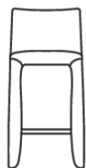
Monster Barstool / Naked Low

Dimensions

41cm | 16.1"



51cm | 20.1"



66cm | 25.98"



93cm | 36.61"

Product

WIDTH 41cm | 16.1"

HEIGHT 93cm | 36.6"

DEPTH 51cm | 20.1"

Packaging

WIDTH 51cm | 20.1"

HEIGHT 108cm | 42.5"

CUBAGE 0.33m³ | 11.67ft³

LENGTH 60cm | 23.6"

WEIGHT 13kg | 28.66lbs

Technical

MATERIAL

Steel frame, foam.

SEAT DEPTH

39cm | 15.4"

SEAT WIDTH

42cm | 16.5"

SEAT HEIGHT

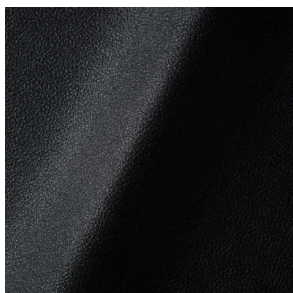
66cm | 26"

WEIGHT CAPACITY

110kg | 242.51lbs

Upholstery

ABBRACCI (available in 6 colours)



COMPOSITION

100% PES

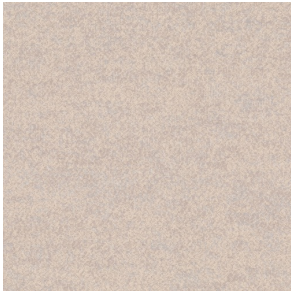
ABRASION

30000 martindale
lightfastness 3 - 4
pilling 5

FIRE RESISTANCE

BS 5852 - Ignition source
0 (Cigarette)
BS 5852 - Ignition source
1 (Match flame equivalent)
EN 1021-1 (Cigarette)
EN 1021-2 (Match)
TB 117-2013

ARDA (available in 12 colours)



ABRASION

50000 martindale
lightfastness 5 - 6
pilling 4 - 5

FIRE RESISTANCE

BS 5852 - Ignition source
0 (Cigarette)
BS 5852 - Ignition source
5 (Crib 5)
BS 5852 - Ignition source
1 (Match flame equivalent)
EN 1021-1 (Cigarette)
EN 1021-2 (Match)
TB 117-2013
EU Ecolabel

DIVINA 3 (available in 56 colours)



COMPOSITION

100% WO

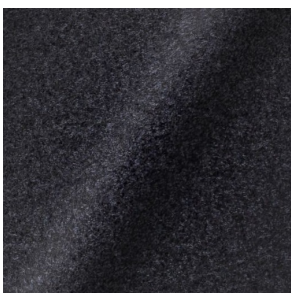
ABRASION

45000 martindale
lightfastness 7
pilling 3

FIRE RESISTANCE

BS 5852 - Ignition source
0 (Cigarette)
BS 5852 - Ignition source
5 (Crib 5)
BS 5852 - Ignition source
1 (Match flame equivalent)
EN 1021-1 (Cigarette)
EN 1021-2 (Match)
TB 117-2013
EU Ecolabel

DIVINA MD (available in 27 colours)



COMPOSITION

100% WO

ABRASION

45000 martindale
lightfastness 6
pilling 3

FIRE RESISTANCE

BS 5852 - Ignition source
0 (Cigarette)
BS 5852 - Ignition source
5 (Crib 5)
BS 5852 - Ignition source
1 (Match flame equivalent)
EN 1021-1 (Cigarette)
EN 1021-2 (Match)
EU Ecolabel

DIVINA MELANGE 3 (available in 49 colours)



COMPOSITION

100% WO

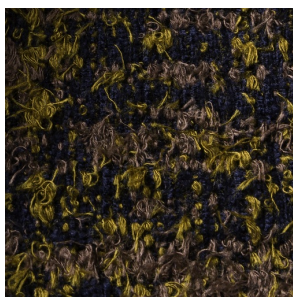
ABRASION

45000 martindale
lightfastness 6 - 7
pilling 3

FIRE RESISTANCE

BS 5852 - Ignition source
0 (Cigarette)
BS 5852 - Ignition source
5 (Crib 5)
BS 5852 - Ignition source
1 (Match flame equivalent)
EN 1021-1 (Cigarette)
EN 1021-2 (Match)
TB 117-2013
EU Ecolabel

Bearded Leopard (available in 3 colours)



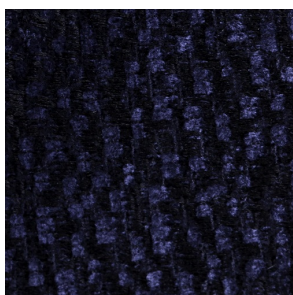
COMPOSITION

77% CV, 15% PES, 7% CO,
1% PA

ABRASION

15000 martindale
lightfastness 4 - 6
pilling 4

Calligraphy Bird (available in 4 colours)



COMPOSITION

64% CV, 21% PES, 15%
CO

ABRASION

50000 martindale
lightfastness 4 - 6
pilling 5

Blushing Sloth Melange Mohair (available in 1 colours)



COMPOSITION

85% WV, 15% WM

ABRASION

15000 martindale
lightfastness 4 - 6
pilling 2 - 3

Blushing Sloth Woolly Mohair (available in 1 colours)



COMPOSITION

24% PES, 15% PA, 8% CO,
24% WM, 29% WV

ABRASION

40000 martindale
lightfastness 4 - 6
pilling 3 - 4

FIORD (available in 39 colours)



COMPOSITION

92% WV, 8% PA

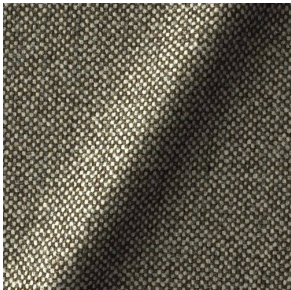
ABRASION

60000 martindale
lightfastness 6
pilling 4 - 5

FIRE RESISTANCE

EN 1021-1 (Cigarette)
EN 1021-2 (Match)
BS 5852 - Ignition source
0 (Cigarette)
BS 5852 - Ignition source
1 (Match flame equivalent)

HALLINGDAL 65 (available in 58 colours)



COMPOSITION

30% CV, 70% WV

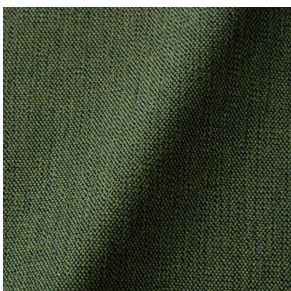
ABRASION

100000 martindale
lightfastness 7
pilling 3 - 4

FIRE RESISTANCE

BS 5852 - Ignition source
0 (Cigarette)
BS 5852 - Ignition source
5 (Crib 5)
BS 5852 - Ignition source
1 (Match flame equivalent)
EN 1021-1 (Cigarette)
EN 1021-2 (Match)
TB 117-2013
EU Ecolabel

JUSTO (available in 11 colours)



COMPOSITION

15% CO, 35% PC, 10% PA,
40% CV

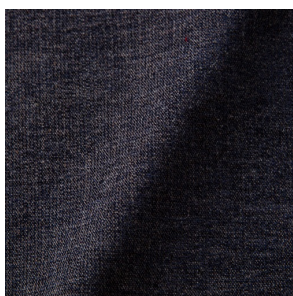
ABRASION

50000 martindale
lightfastness 5
pilling 4

FIRE RESISTANCE

EN 1021-1 (Cigarette)
EN 1021-2 (Match)
TB 117-2013

LISCIO (available in 12 colours)



COMPOSITION

35% WO, 35% CV, 21%
CO, 9% PA

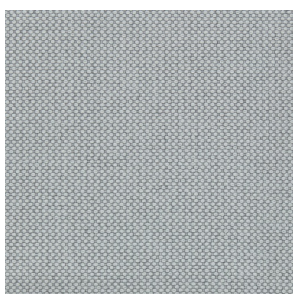
ABRASION

30000 martindale
lightfastness 4 - 6
pilling 4

FIRE RESISTANCE

TB 117-2013

MERIT (available in 43 colours)



COMPOSITION

24% PES, 76%

ABRASION

85000 martindale
lightfastness 7
pilling 4

ORAY RAY (available in 15 colours)

COMPOSITION

39% LI, 38% CV, 15% PE,
8% CO

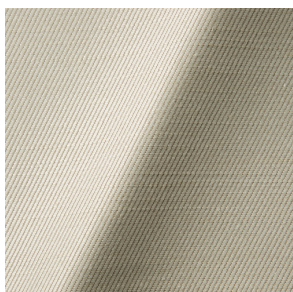
ABRASION

30000 martindale
pilling 4 - 5

FIRE RESISTANCE

BS 5852 - Ignition source
0 (Cigarette)
BS 5852 - Ignition source
1 (Match flame equivalent)
TB 117-2013

ORAY RONAN (available in 5 colours)



COMPOSITION

39% LI, 38% CV, 15% PE,
8% CO

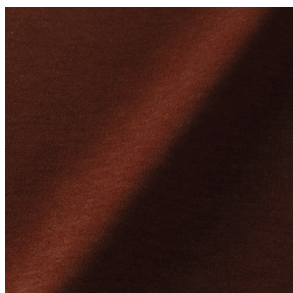
ABRASION

30000 martindale
pilling 4 - 5

FIRE RESISTANCE

BS 5852 - Ignition source
0 (Cigarette)
BS 5852 - Ignition source
1 (Match flame equivalent)
TB 117-2013

PALETTE (available in 24 colours)



COMPOSITION

42% CO, 29% WO, 29%
TL

ABRASION

45000 martindale
lightfastness 4 - 5
pilling 3 - 3

FIRE RESISTANCE

BS 5852 - Ignition source
0 (Cigarette)
TB 117-2013
BS 5852 - Ignition source
5 (Crib 5)

REMIX 3 (available in 53 colours)



COMPOSITION

10% PA, 90% WV

ABRASION

100000 martindale
lightfastness 5
pilling 4

SOLIS (available in 9 colours)



COMPOSITION

60% WO, 30% PES, 2%
PA, 3% PC

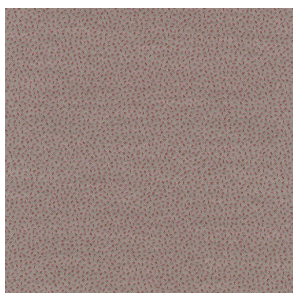
ABRASION

40000 martindale
lightfastness 5
pilling 3 - 4

FIRE RESISTANCE

EN 1021-1 (Cigarette)
EN 1021-2 (Match)
TB 117-2013

SPRINKLES (available in 23 colours)



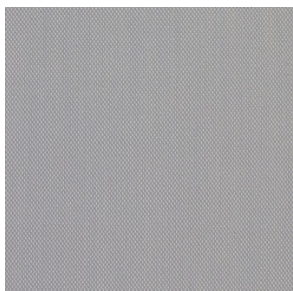
ABRASION

80000 martindale
lightfastness 7
pilling 4

FIRE RESISTANCE

EU Ecolabel
BS 5852 - Ignition source
0 (Cigarette)
BS 5852 - Ignition source
5 (Crib 5)
BS 5852 - Ignition source
1 (Match flame equivalent)
EN 1021-1 (Cigarette)
EN 1021-2 (Match)
TB 117-2013

STEELCUT TRIO 3 (available in 54 colours)



COMPOSITION

90% WV, 10% PA

ABRASION

100000 martindale
lightfastness 5
pilling 4

FIRE RESISTANCE

BS 5852 - Ignition source
0 (Cigarette)
BS 5852 - Ignition source
1 (Match flame equivalent)
EN 1021-1 (Cigarette)
EN 1021-2 (Match)
EU Ecolabel

VESPER (available in 9 colours)



COMPOSITION

10% CO, 40% LI, 10% PA,
10% PES, 30% CV

ABRASION

40000 martindale
lightfastness 5
pilling 4

FIRE RESISTANCE

EN 1021-1 (Cigarette)
EN 1021-2 (Match)
TB 117-2013